



Coppice Row, Epping, CM16

BUTLER  STAG



Chestnut Mews is a stunning three bedroom duplex apartment occupying a prime position in the heart of Theydon Bois.



- Purpose Built Development
- Two Allocated Parking Spaces
- Open Plan Kitchen
- Two En-Suites
- Communal Garden
- Three Bedrooms
- Split Level Apartment

Spanning just over 1200' sf of living space this stunning split level apartment offers a spacious and free flowing open plan lounge/kitchen diner, three double bedrooms with the luxury of two bedrooms having a en-suite bathrooms, with a separate family bathroom,

Externally, the property comes with allocated parking for two vehicles, with access to a bike shed.

Coppice Row is perhaps one of Theydon Bois' most sought after roads which contains some of the area's finest properties. It lies within easy reach of local amenities within the village. The village is arranged around the green, complete with duck pond and offers a parade of shops, several pubs and restaurants with access to Epping Forest. Transport links into London are excellent and there are several well regarded state and private schools within easy reach. Local leisure facilities include golf courses, sports centres and a tennis club.

Council Tax Band E

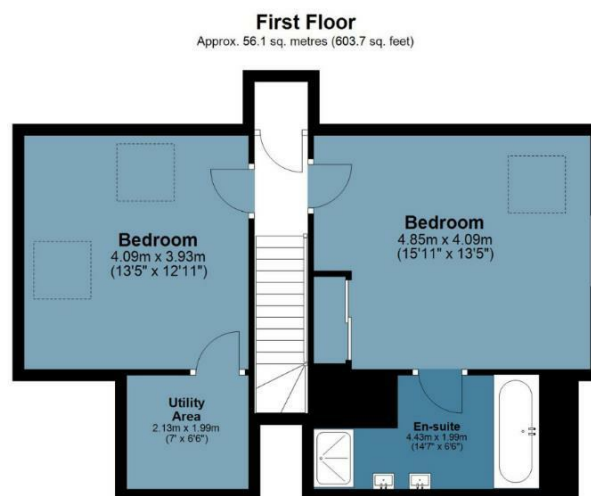
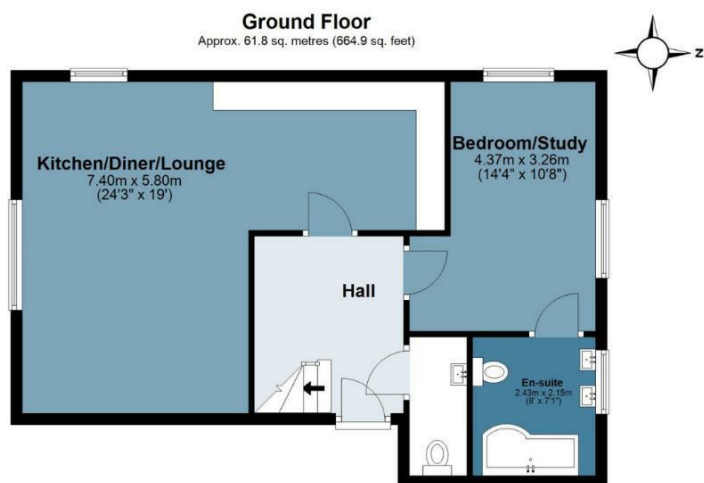




Chestnut Mews

Approx. Gross Internal Area 117.9 sq. metres (1268.7 sq. feet)

BUTLER & STAG



Measurements are approximate and for illustration purposes only. While we do not doubt the accuracy and completeness, we advise you conduct a careful independent assessment of the property to determine monetary value
© @modephotok www.modephoto.co.uk

IMPORTANT NOTICE - These particulars have been prepared in good faith and they are not intended to constitute part of an offer or contract. We have not performed a structural survey on this property and the services, appliances and specific fittings have not been tested. All photographs, measurements, floor plans and distances referred to are given as a guide and should not be relied upon.

BUTLER & STAG

☎ 01992 667666

🏠 4 Forest Drive, Theydon Bois, Essex, CM16 7EY

✉ theydon@butlerandstag.com

www.butlerandstag.uk